

Ducted Range

Whole Home Systems



Why Choose Fujitsu?

New Zealand's Favourite Air®

Fujitsu General is a leading supplier of heat pumps/air conditioners in New Zealand, with a portfolio to suit both residential and commercial applications.

We focus all of our research and manufacturing strengths into heat pumps/air conditioners which has resulted in our extensive range of world-class, energy efficient, market-leading systems.

Fujitsu General strives to consistently provide high quality, reliable products accompanied by superior customer service. To be 'New Zealand's Favourite Air®' means to be the best heat pump/air conditioning company to deal with in New Zealand, not just a leading heat pump/air conditioning brand.

That's why we're proud to say we are 'New Zealand's Favourite Air®'.

Peace of Mind

Fujitsu's accreditation programme for installers helps ensure that you'll get the right fit for your unique space. A professional installation is essential for the efficient performance of any heat pump/air conditioner.

Extensive Manufacturer's Warranty

Fujitsu General believes in the quality and reliability of every product we sell. Our 6 year parts and labour warranty applies to residential applications when installed by a Fujitsu Accredited Installer. A standard 5 year warranty applies otherwise.



Please visit www.fujitsugeneral.co.nz/warranty for more information.

Fujitsu Dealer Network

Fujitsu has a comprehensive network of dealers across New Zealand. This ensures there is a local stockist in your area to assist you in purchasing a Fujitsu heat pump/air conditioning system for your home.



Specialist expertise



Accredited Installer programme



6 year manufacturer's warranty*



Trusted brand

*When the unit is installed by a Fujitsu Accredited Installer (residential installation only).

A Trusted Brand

Fujitsu understands that our customers are investing in our brand and trusting that we will provide their family with a comfortable living environment all year round. Fujitsu is honoured to be consistently voted one of New Zealand's most trusted heat pump/air conditioning brands. We are proud to see the amount of trust our customers have in our products and the service provided by our network of Fujitsu Accredited Installers.



State of the Art Research and Development

Our state of the art research and development centre, located at our headquarters in Japan, is equipped with numerous testing facilities simulating a variety of heat pump/air conditioning operating conditions. Our rigorous testing aims to meet Fujitsu's high standard of product quality and reliability.

Exceptional After Sales Service

At Fujitsu, we pride ourselves on providing exceptional customer service. Fujitsu General Assist is our in-house customer care and technical support department, which was implemented to deliver a high level of support and accessibility to our customers.

Fujitsu General Assist deploys Fujitsu-trained technicians in Auckland and Christchurch. These technicians are well-equipped with the necessary tools and spare parts to enable them to resolve issues onsite, promptly. This offers customers a high first time fix rate and seamless experience.





Ducted Range



Whole home solutions
from small to large homes including
apartments and townhouses

What Is Ducted Heat Pump/Air Conditioning and How Does It Work?

Ducted heat pump/air conditioning is usually a whole home solution that allows you to condition multiple rooms or the entire house using just one system. The indoor unit is located in the ceiling, whilst the outdoor unit is placed in a suitable location outside the home.

Conditioned air is circulated via a network of ducts in your ceiling cavity, with outlets in as many or as few rooms as you wish.

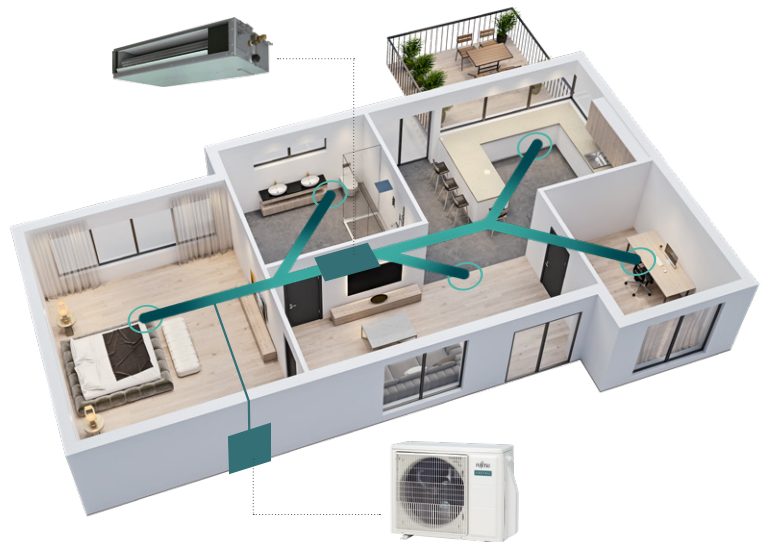
The temperature and hours of operation are controlled by a simple and easy to use wall controller.

All Fujitsu ducted heat pumps/air conditioners are reverse cycle, meaning you can come home to comfort, all year round.

What Is Zone Control?

Ducted heat pump/air conditioning allows for the home to be divided into separate areas, or 'zones'. Zoning will allow you to have greater control over the airflow around the home and provides flexibility to use your system to suit your living arrangements and lifestyle.

Depending on the system, you can select which zones are on or off, or with advanced controllers select different temperatures for specific zones at the same time. This can improve energy efficiency and deliver superior comfort.

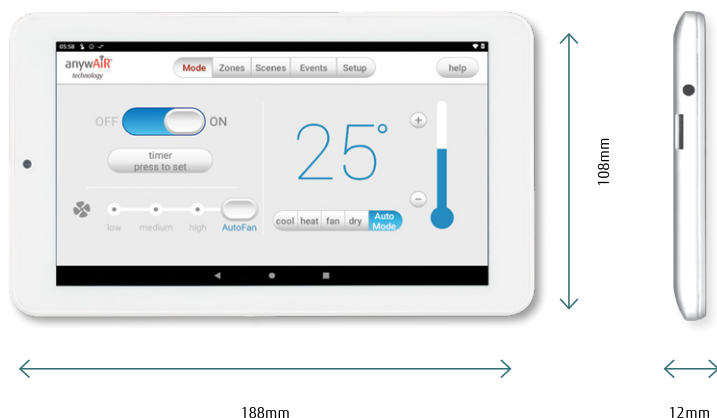


Energy Efficiency

By using the weekly timer function, dampers can be opened and closed to match your daily schedule. It's a 'set and forget' way to keep the temperature of your home comfortable all year round.

anywAiR[®] Technology Ducted Controller

Control your air from anywhere.



Temperature Controlled VAV²

Control temperature and air flow in up to 10 zones



Create up to 12 scenarios

Program scenes through custom settings

0-100%

Variable Air Volume (VAV)³

Select the percentage of air flow for each zone



Timers

Turn the unit on/off after a set time



AC Control

On/Off, fan speed, set point and mode

Wi-Fi Control For Fujitsu Ducted Heat Pumps/Air Conditioners¹

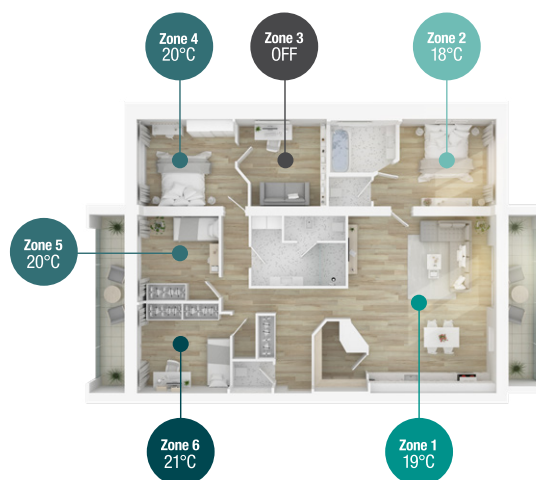
The Fujitsu General anywAiR[®] technology ducted controller provides Wi-Fi control for Fujitsu ducted heat pump/air conditioning systems via a wall mounted touch pad. Remote access is available using the anywAiR[®] App¹, giving control of your ducted system anytime, anywhere with selected smartphone and tablet devices.

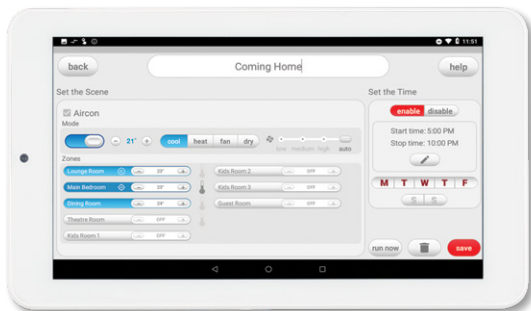
Easy To Use Touch Pad

Mounted portrait or landscape to the wall by a Fujitsu Installer, the anywAiR[®] technology ducted controller is simple to set-up using a Google Play Store account. The touch pad is the central point from which to operate the system and can be used to manage a variety of Android apps such as weather, recipes, music and other home automation apps.

Wi-Fi Control Of Up To 10 Zones

The new technology enables you to run your ducted system efficiently and easily, by controlling the airflow and temperature of up to 10 different zones within your home.





Programmable Scenarios

Create up to 12 custom scenes to run a series of commands at the touch of a button or at a chosen time. Commands can include turning the unit on and off, changing the mode or temperature, and selecting which zones are open. Scenarios such as going to work, coming home or bedtime can be easily programmed to control the air flow and temperature to rooms required at set times.

Variable Air Volume (VAV)³

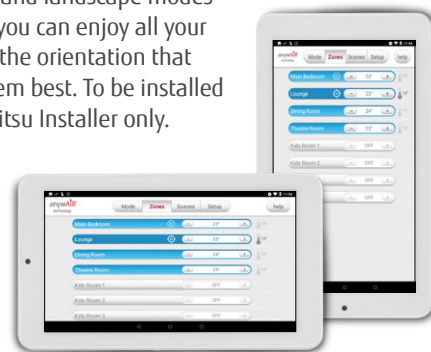
Variable Air Volume (VAV) control allows you to select the percentage of air flow for each zone from 0 to 100 percent, in 5 percent increments. This gives you greater control of air flow to each zone to better meet your comfort needs.

Temperature Controlled VAV²

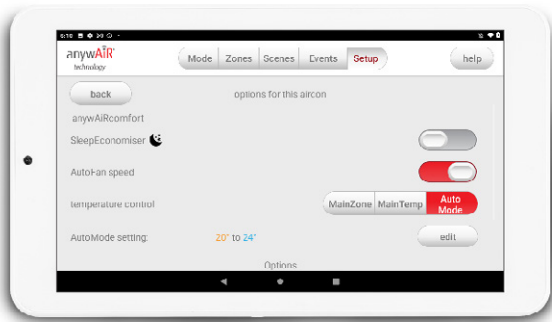
Temperature Controlled VAV is available to zones which have the optional temperature sensors installed. This feature allows you to choose the desired temperature for a zone and the system will automatically adjust the air flow to assist in maintaining each zone's desired temperature.

Mounting

Your anywAiR[®] touch pad is permanently attached to your wall with the ability to pivot between portrait and landscape modes so that you can enjoy all your apps in the orientation that suits them best. To be installed by a Fujitsu Installer only.



¹The anywAiR[®] App is only compatible with a selected range of Fujitsu General ducted systems when the optional anywAiR[®] technology Wi-Fi ducted controller is installed. It is not a standard inclusion when purchasing a Fujitsu ducted system and must be installed by a Fujitsu Installer. ²Requires optional individual room sensors to be installed. ³VAV control is achieved by adjusting the opposed blade damper to control the airflow. The airflow fan setting (high/med/low/auto) of the system works independently to this function. Copyright © 2021 Fujitsu General New Zealand. All rights reserved. Actual products' colours may be different from the colours shown in this printed material. App Store is a service mark of Apple Inc. ©2021 Google LLC All rights reserved. Google Play and the Google Play logo are trademarks of Google LLC. Other trademarks and tradenames are acknowledged to be the copyright of their respective holders.



SleepEconomiser

The SleepEconomiser feature will automatically adjust your heat pump/air conditioner from COOL to FAN mode overnight from 10pm to 6am. It will then adjust itself back. This mode will help save energy during hot summer nights and help reduce noise for sleeping neighbours.

AutoFan

Allows the zone controller to automatically adjust the unit fan speed based on the current number of open zones.

AutoMode

Taking MainTemp to the next level, AutoMode gives you full temperature automation. This feature not only selects a zone as MainZone, it will also change the mode of air conditioning between cooling and heating in order to reach and maintain the desired temperature.

MainZone

The MainZone feature makes that particular zone the “information centre” for the heat pump/air conditioning unit. That means the set-point for that zone becomes the setpoint the heat pump/air conditioning unit will work toward. The actual measured temperature of that zone is the temperature sent to the unit for it to make its decisions about whether to start/stop or speed up/down to effectively achieve the set-point while maintaining constant airflow in the MainZone.

MainTemp

Acts as an automated MainZone. MainTemp will automatically select the zone with the greatest difference between actual and desired temperatures. Once this zone is selected and the desired temperature is reached, a new room will be selected and the process repeated. For example, if your living room is currently 30°C and your desired temperature is 21°C then the MainTemp will focus on this room until the desired temperature is reached before focusing on another room or zone.

Download the free app to control your air from anywhere

1. Download the anywAiR® App from the App store or Google Play
2. Follow the App configuration steps
3. Once set up, the anywAiR® App interacts with the anywAiR® technology ducted controller to remotely control your ducted system.



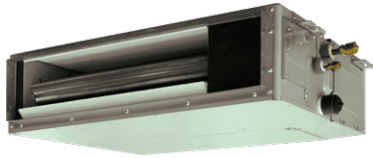
¹The anywAiR® App is only compatible with a selected range of Fujitsu General ducted systems when the optional anywAiR® technology Wi-Fi ducted zone controller is installed. It is not a standard inclusion when purchasing a Fujitsu ducted system and must be installed by a Fujitsu Installer. ²Requires optional individual room sensors to be installed. ³VAV control is achieved by adjusting the opposed blade damper to control the airflow. The airflow fan setting (high/med/low/auto) of the system works independently to this function. Copyright© 2021 Fujitsu General New Zealand. All rights reserved. Actual products' colours may be different from the colours shown in this printed material. UTY-ANY1. App Store is a service mark of Apple Inc. ©2021 Google LLC All rights reserved. Google Play and the Google Play logo are trademarks of Google LLC. Other trademarks and tradenames are acknowledged to be the copyright of their respective holders.



Bulkhead

- ✓ A single-room solution
- ✓ Suitable for townhouses and apartments
- ✓ Quiet and efficient
- ✓ Intuitive control
- ✓ R32 refrigerant
- ✓ Compact design to allow for flexible installation in the best available space

Indoor units

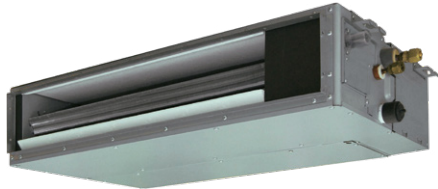


ARHT09KSLAP

2.5kW cooling | 3.2kW heating

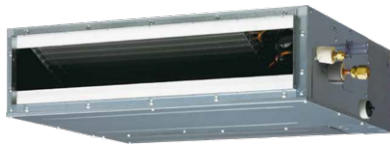
ARHT12KSLAP

3.5kW cooling | 4.0kW heating



ARHT18KSLAP

5.0kW cooling | 6.0kW heating

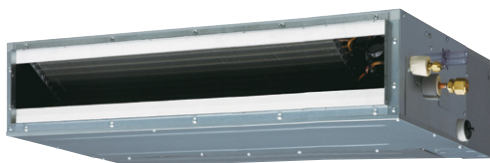


ARHT09KLLAP

2.5kW cooling | 3.2kW heating

ARHT12KLLAP

3.5kW cooling | 4.0kW heating

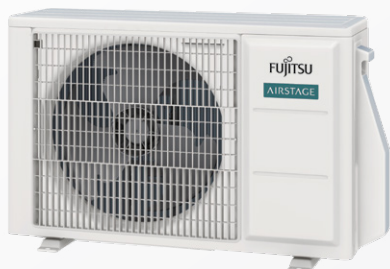


ARHT18KLLAP

5.0kW cooling | 6.0kW heating



Outdoor units



AOTH09/12KBTA



AOTH18KBTA

Standard controller

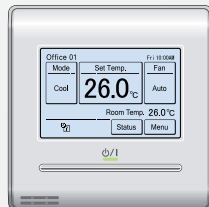


LCD
Touch Panel
Controller
UTY-RNRT

Available optional controllers



anywAiR®
Technology Wi-Fi
Adaptor II
SET-UTY-NXT



LCD
Touch Panel
Controller
UTY-RNRYT5



LCD Simple
Controller
with Operation
mode
UTY-RSRYT

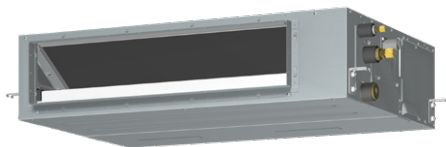


LCD Simple
Controller
without Operation
mode
UTY-RHRYT

Mid Static Slimline

- ✓ Suitable for apartments and smaller homes typically up to 4 bedrooms
- ✓ Compatible with the optional Wi-Fi anywAiR® technology ducted controller
- ✓ R32 refrigerant
- ✓ High performance model available – larger outdoor unit and more energy efficient
- ✓ Compact design to allow for flexible installation in the ceiling
- ✓ Zone system compatible

Indoor units



Standard

ARTH18KMTAP

5.0kW | 6.0kW
cooling | heating

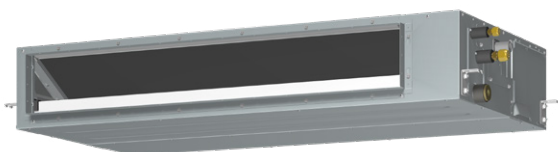
ARTH24KMTAP

7.1kW | 8.0kW
cooling | heating

High performance

ARTH24KMTAP-HP

7.1kW | 8.0kW
cooling | heating



ARTH30KMTAP

8.5kW | 10.0kW
cooling | heating

ARTH30KMTAP-HP

8.5kW | 10.0kW
cooling | heating

ARTH36KMTAP

10.0kW | 11.2kW
cooling | heating

ARTH45KMTAP

12.5kW | 14.0kW
cooling | heating

ARTH54KMTAP

13.0kW | 15.0kW
cooling | heating



Outdoor units



Standard	AOTH18KBTA	AOTH24KBTA	AOTH30/36KBTA	AOTH45/54KBTA
High performance			AOTH30KCTA	AOTH24KCTA

Standard controller



LCD Touch Panel Controller
UTY-RNRT

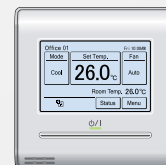
Available optional controllers



anywAiR[®] technology ducted controller
UTY-ANY1



anywAiR[®] Technology Wi-Fi Adaptor II
SET-UTY-NXT



LCD Touch Panel Controller
UTY-RNRYT5



LCD Simple Controller with Operation mode
UTY-RSRYT



LCD Simple Controller without Operation mode
UTY-RHRYT

High Static Single Phase & Three Phase R32

- ✓ Suitable for larger homes, typically up to 4 bedrooms
- ✓ Compatible with the optional Wi-Fi anywAiR® technology ducted controller
- ✓ 5 High Static Single Phase High Performance models available from 10.0kW to 18.0kW heating capacity for improved energy efficiency
- ✓ Zone system compatible
- ✓ R32 refrigerant
- ✓ Compact indoor design to allow for easy installation
- ✓ Only 500mm of clearance space required in front of the outdoor unit. Suitable for narrow spaces

Indoor units



Standard

ARTH24KHTA

7.1kW cooling | 8.0kW heating

ARTH30KHTA

8.5kW cooling | 10.0kW heating

ARTH36KHTA

10.0kW cooling | 11.2kW heating

High performance

ARTH30KHTA-HP

8.5kW cooling | 10.0kW heating

ARTH36KHTA-HP

10.0kW cooling | 12.5kW heating

3 phase

ARTH36KHTA-3PH

10.0kW cooling | 11.2kW heating



ARTH45KHTA

12.5kW cooling | 14.0kW heating

ARTH54KHTA

14.0kW cooling | 15.5kW heating

ARTH60KHTA

15.5kW cooling | 18.0kW heating

ARTH45KHTA-HP

12.5kW cooling | 15.0kW heating

ARTH54KHTA-HP

14.0kW cooling | 16.5kW heating

ARTH45KHTA-3PH

12.5kW cooling | 14.0kW heating

ARTH54KHTA-3PH

14.0kW cooling | 15.5kW heating

ARTH60KHTA-3PH

15.5kW cooling | 18.0kW heating



ARTH60KHTB

16.0kW cooling | 18.0kW heating



Outdoor units



Standard	AOTH24KBTA	AOTH30/36KBTA	AOTH45/54KBTA	AOTH60KBTA
High performance			AOTH30/36KCTA	AOTH45/54/60KCTA
3 phase		AOTH36KRTA	AOTH45/54KRTA	AOTH60KRTA

Standard controller



LCD Touch Panel Controller
UTY-RNRT

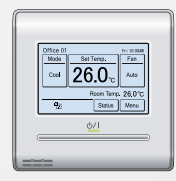
Available optional controllers



anywAiR[®] technology ducted controller
UTY-ANY1



anywAiR[®] Technology Wi-Fi Adaptor II
SET-UTY-NXT



LCD Touch Panel Controller with Operation mode
UTY-RNRYS



LCD Simple Controller with Operation mode
UTY-RSRYT



LCD Simple Controller without Operation mode
UTY-RHRYT

High Static Three Phase R410A

- ✓ Suitable for larger homes, typically up to 6 bedrooms
- ✓ Allows for an increased number of air ducts to be installed
- ✓ Compatible with the optional Wi-Fi anywAiR® technology ducted controller
- ✓ Optional truss transition kit (UTD-TJKA) available where ceiling cavity space may be limited¹
- ✓ Indoor unit can be separated to enable easy in-roof installation
- ✓ R410A refrigerant

Indoor units



ARTG65LHTA

18.0kW cooling | 20.0kW heating



ARTC72LATU

20.3kW cooling | 22.6kW heating



ARTC90LATU

25.0kW cooling | 28.0kW heating



Outdoor units



AOTG65LRLA



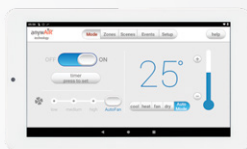
AOTA72/90LALT

Standard controller



LCD
Touch Panel
Controller
UTY-RVNYN

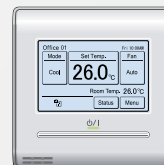
Available optional controllers



anywAiR[®]
technology ducted
controller
UTY-ANY1



anywAiR[®]
Technology Wi-Fi
Adaptor II¹
SET-UTY-NXT



LCD
Touch Panel
Controller¹
UTY-RNRYT5



LCD Simple
Controller
with Operation
mode¹
UTY-RSRYT



LCD Simple
Controller
without Operation
mode¹
UTY-RHRYT

¹Applicable to ARTG65LHTA model.

Feature Checklist

		ARTH09KSLAP	ARTH09KLLAP	ARTH12KSLAP	ARTH12KLLAP	ARTH18KSLAP	ARTH18KLLAP	ARTH18KMTAP	ARTH24KMTAP	ARTH30KMTAP	ARTH36KMTAP	ARTH45KMTAP	ARTH54KMTAP
		Bulkhead						Mid Static Slimline					
Auto Changeover	Automatically switches between operating modes based on the temperature setting and room temperature	✓	✓	✓	✓	✓	✓	✓	✓	✓	✓	✓	✓
Auto Restart	The unit will automatically restart in the same operating mode after a temporary loss of power	✓	✓	✓	✓	✓	✓	✓	✓	✓	✓	✓	✓
Automatic Airflow Adjustment	The micro-processor automatically adjusts air flow to follow changes in room temperature	✓	✓	✓	✓	✓	✓	✓	✓	✓	✓	✓	✓
Automatic Static Pressure Setting Adjustment	The unit will automatically set the optimal static pressure setting							✓	✓	✓	✓	✓	✓
Blue Fin Heat Exchanger	Corrosion-resistance has been improved by blue fin treatment of the outdoor unit heat exchanger	✓	✓	✓	✓	✓	✓	✓	✓	✓	✓	✓	✓
Connectable Distributing Duct	Systems are capable of attaching field-supplied branch ducts distributing the airflow	✓	✓	✓	✓	✓	✓	✓	✓	✓	✓	✓	✓
Connectable Fresh Air Duct	Systems are capable of attaching field-supplied branch ducts to bring fresh air in							✓	✓	✓	✓	✓	✓
Economy Mode	The temperature will adjust by 1°C to allow for a reduction in power drawn from the compressor to help save energy	✓	✓	✓	✓	✓	✓	✓	✓	✓	✓	✓	✓
Error Code Display	Shown on the wired remote controller display or the indicator lamps on the indoor receiver unit	✓	✓	✓	✓	✓	✓	✓	✓	✓	✓	✓	✓
Filter Sign	Set the interval frequency to be reminded to clean the air filter on your unit	✓	✓	✓	✓	✓	✓	✓	✓	✓	✓	✓	✓
In-Built Drain Pump	The drain pump is in-built into the system	✓	✓	✓	✓	✓	✓	✓	✓	✓	✓	✓	✓
Long Piping Capability 75m	Equipped with a maximum pipe length of 75m												
On-Off Timer	Can be set to operate once every 24 hours	✓	✓	✓	✓	✓	✓	✓	✓	✓	✓	✓	✓
Operating Temperature Range 50°C	The maximum guaranteed operating temperature range is 50 degrees in cooling mode							✓	✓	✓	✓	✓	✓
Program Timer	Allows selection of one of four options. ON, OFF, ON->OFF, or OFF->ON							✓	✓	✓	✓	✓	✓
Weekly + Setback Timer	Can set temperature for two time spans and for each day of the week	✓	✓	✓	✓	✓	✓						
Weekly Timer	Different on-off timers can be set for up to 7 days	✓	✓	✓	✓	✓	✓	✓	✓	✓	✓	✓	✓
Zone Control	Air condition selected zones within the indoor space							✓	✓	✓	✓	✓	✓

ARTH24KMTAP-HP	ARTH30KMTAP-HP	ARTH24KH1A	ARTH30KH1A	ARTH36KH1A	ARTH45KH1A	ARTH54KH1A	ARTH60KH1A	ARTH30KH1A-HP	ARTH36KH1A-HP	ARTH45KH1A-HP	ARTH54KH1A-HP	ARTH60KH1B	ARTH36KH1A-3PH	ARTH45KH1A-3PH	ARTH54KH1A-3PH	ARTH60KH1A-3PH	ARTG65LH1A	ARTC72LATU	ARTC90LATU
Mid Static Slimline (HP)	High Static Single Phase							High Static Single Phase (HP)					High Static Three Phase (R32)				High Static Three Phase (R410A)		
✓	✓	✓	✓	✓	✓	✓	✓	✓	✓	✓	✓	✓	✓	✓	✓	✓	✓	✓	✓
✓	✓	✓	✓	✓	✓	✓	✓	✓	✓	✓	✓	✓	✓	✓	✓	✓	✓	✓	✓
✓	✓	✓	✓	✓	✓	✓	✓	✓	✓	✓	✓	✓	✓	✓	✓	✓	✓	✓	✓
✓	✓	✓	✓	✓	✓	✓	✓	✓	✓	✓	✓	✓	✓	✓	✓	✓	✓	✓	✓
✓	✓	✓	✓	✓	✓	✓	✓	✓	✓	✓	✓	✓	✓	✓	✓	✓	✓	✓	✓
✓	✓	✓	✓	✓	✓	✓	✓	✓	✓	✓	✓	✓	✓	✓	✓	✓	✓	✓	✓
												✓							
✓	✓	✓	✓	✓	✓	✓	✓	✓	✓	✓	✓	✓	✓	✓	✓	✓	✓	✓	✓
✓	✓	✓	✓	✓	✓	✓	✓	✓	✓	✓	✓	✓	✓	✓	✓	✓	✓	✓	✓
✓	✓	✓	✓	✓	✓	✓	✓	✓	✓	✓	✓	✓	✓	✓	✓	✓	✓	✓	✓
✓	✓																		
✓	✓							✓	✓	✓	✓	✓					✓	✓	✓
✓	✓	✓	✓	✓	✓	✓	✓	✓	✓	✓	✓	✓	✓	✓	✓	✓	✓	✓	✓
✓	✓	✓	✓	✓	✓	✓	✓	✓	✓	✓	✓	✓	✓	✓	✓	✓	✓	✓	✓
✓	✓	✓	✓	✓	✓	✓	✓	✓	✓	✓	✓	✓	✓	✓	✓	✓	✓	✓	✓
✓	✓	✓	✓	✓	✓	✓	✓	✓	✓	✓	✓	✓	✓	✓	✓	✓	✓	✓	✓
✓	✓	✓	✓	✓	✓	✓	✓	✓	✓	✓	✓	✓	✓	✓	✓	✓	✓	✓	✓
✓	✓	✓	✓	✓	✓	✓	✓	✓	✓	✓	✓	✓	✓	✓	✓	✓	✓	✓	✓
✓	✓	✓	✓	✓	✓	✓	✓	✓	✓	✓	✓	✓	✓	✓	✓	✓	✓	✓	✓

Product Specifications

Bulkhead R32

Set Code			SET-ARTH09KSLAP	SET-ARTH12KSLAP	SET-ARTH18KSLAP
Model No.	Indoor unit		ARTH09KSLAP	ARTH12KSLAP	ARTH18KSLAP
	Outdoor unit		AOTH09KBTA	AOTH12KBTA	AOTH18KBTA
Power Source	V / Ph / Hz		230 / 1 / 50		
Capacity	Cooling (Rated (Min - Max))	kW	2.50 (0.9 - 3.6)	3.50 (0.9 - 4.1)	5.00 (0.9 - 5.9)
	Heating (Rated (Min - Max))	kW	3.20 (0.9 - 4.5)	4.00 (0.9 - 5.1)	6.00 (0.9 - 7.1)
Input Power	Cooling (Rated (Max))	kW	0.64 (1.15)	0.98 (1.41)	1.48 (1.95)
	Heating (Rated (Max))	kW	0.80 (1.5)	1.1 (1.97)	1.73 (2.58)
EER	Cooling	kW / kW	3.91	3.57	3.38
COP	Heating	kW / kW	4.00	3.64	3.47
Star Rating	Cooling: Hot/Average/Cold		3 / 2.5 / 3	3 / 2.5 / 2.5	3 / 2.5 / 2.5
	Heating: Hot/Average/Cold		2.5 / 2.5 / 2	2.5 / 2 / 1.5	2.5 / 2 / 1.5
TCSPF ¹	Residential (Hot/Average/Cold)	kW	4.999 / 4.49 / 4.551	4.645 / 4.269 / 4.374	4.584 / 4.264 / 4.418
HSPF ²	Residential (Hot/Average/Cold)	kW	4.339 / 4.053 / 3.736	4.371 / 3.934 / 3.492	4.43 / 3.86 / 3.319
Running current	Cooling/Heating		amps	4.6 / 5.1	6.3 / 7.3
Moisture Removal			l/hr	0.5	1.5
Sound Pressure Level	Indoor (Cooling)	High/Quiet	dBA	29 / 23	31 / 23
	Indoor (Heating)	High/Quiet		29 / 23	31 / 23
	Outdoor (Cooling/Heating)	High		41 / 46	47 / 48
Sound Power Level	Outdoor	High	59	61	62
Static Pressure Range	Min - Max		PA	-	-
Air Circulation	Indoor (Cooling)	High Fan	l/sec	167	181
	Indoor (Heating)	High Fan		167	181
Dimensions H x W x D	Indoor		mm	198 x 700 x 450	198 x 700 x 450
	Outdoor			542 x 799 x 290	542 x 799 x 290
Net Weight	Indoor		kg	15.50	15.50
	Outdoor			32.00	32.00
Connection Pipe Diameter (Liquid/Gas)			mm	Ø6.35 / Ø9.52	Ø6.35 / Ø12.70
Pipe Length (Max (Precharged))			m	20 (15)	30 (20)
Max Height Difference			m	15	20
Operation Range	Outdoor (Min - Max)	Cooling	°CDB	-10 to 46	-10 to 46
		Heating		-15 to 24	-15 to 24
Refrigerant	Type		R32	R32	R32
	Charge		kg	850	850

¹Total Cooling Seasonal Performance Factor

²Heating Seasonal Performance Factor

Bulkhead R32

Set Code			SET-ARTH09KLLAP	SET-ARTH12KLLAP	SET-ARTH18KLLAP
Model No.	Indoor unit		ARTH09KLLAP	ARTH12KLLAP	ARTH18KLLAP
	Outdoor unit		AOTH09KBTA	AOTH12KBTA	AOTH18KBTA
Power Source	V / Ph / Hz		230 / 1 / 50		
Capacity	Cooling (Rated (Min - Max))	kW	2.50 (0.9 - 3.6)	3.50 (0.9 - 4.1)	5.00 (0.9 - 5.9)
	Heating (Rated (Min - Max))	kW	3.20 (0.9 - 4.8)	4.00 (0.9 - 5.5)	6.00 (0.9 - 7.5)
Input Power	Cooling (Rated (Max))	kW	0.61 (1.11)	0.93 (1.33)	1.38 (2.00)
	Heating (Rated (Max))	kW	0.77 (1.48)	1.05 (1.87)	1.60 (2.39)
EER	Cooling	kW / kW	4.10	3.76	3.62
COP	Heating	kW / kW	4.16	3.81	3.75
Star Rating	Cooling: Hot/Average/Cold		3.5 / 3 / 3	3 / 2.5 / 2.5	3 / 3 / 3
	Heating: Hot/Average/Cold		3 / 2.5 / 2	3 / 2.5 / 2	3 / 2.5 / 2
TCSPP ¹	Residential (Hot/Average/Cold)	kW	5.08 / 4.535 / 4.567	4.808 / 4.397 / 4.485	4.868 / 4.508 / 4.656
HSPF ²	Residential (Hot/Average/Cold)	kW	4.606 / 4.27 / 3.9	4.589 / 4.116 / 3.618	4.661 / 4.105 / 3.536
Running current	Cooling/Heating		amps	3.1 / 4	4.4 / 5
Moisture Removal			l/hr	0.7	1.3
Sound Pressure Level	Indoor (Cooling)	High/Quiet	dBA	28 / 25	32 / 27
	Indoor (Heating)	High/Quiet		28 / 24	32 / 27
	Outdoor (Cooling/Heating)	High		41 / 46	48 / 49
Sound Power Level	Outdoor	High		59	62
Static Pressure Range	Min - Max		PA	-	-
Air Circulation	Indoor (Cooling)	High Fan	l/sec	167	261
	Indoor (Heating)	High Fan		167	261
Dimensions H x W x D	Indoor		mm	198 x 700 x 620	198 x 900 x 620
	Outdoor			542 x 799 x 290	632 x 799 x 290
Net Weight	Indoor		kg	17.00	20.00
	Outdoor			32.00	36.00
Connection Pipe Diameter (Liquid/Gas)			mm	Ø6.35 / Ø9.52	Ø6.35 / Ø12.70
Pipe Length (Max (Precharged))			m	20 (15)	30 (20)
Max Height Difference			m	15	20
Operation Range	Outdoor (Min - Max)	Cooling	°CDB	-10 to 46	-10 to 46
		Heating		-15 to 24	-15 to 24
Refrigerant	Type		kg	R32	R32
	Charge			850	1,020

Product Specifications

Mid Static Slimline R32

Set Code			SET-ARTH18KMTAP	SET-ARTH24KMTAP	SET-ARTH30KMTAP	SET-ARTH36KMTAP	SET-ARTH45KMTAP	SET-ARTH54KMTAP	
Model No.	Indoor unit		ARTH18KMTAP	ARTH24KMTAP	ARTH30KMTAP	ARTH36KMTAP	ARTH45KMTAP	ARTH54KMTAP	
	Outdoor unit		AOTH18KBTA	AOTH24KBTA	AOTH30KBTA	AOTH36KBTA	AOTH45KBTA	AOTH54KBTA	
Power Source	V / Ph / Hz		230 / 1 / 50						
Capacity	Cooling (Rated (Min - Max))	kW	5.00 (0.9 - 6.4)	7.10 (1.8 - 8.1)	8.50 (2.8 - 10.3)	10.00 (2.8 - 11.4)	12.50 (4.0 - 14.0)	13.00 (4.5 - 15.0)	
	Heating (Rated (Min - Max))	kW	6.00 (0.9 - 7.8)	8.00 (2.0 - 9.1)	10.00 (2.7 - 11.3)	11.20 (2.7 - 14.0)	14.00 (4.2 - 16.5)	15.00 (4.7 - 18.0)	
Input Power	Cooling (Rated (Max))	kW	1.37 (1.95)	2.15 (2.92)	2.6 (4.28)	3.23 (4.3)	4.0 (5.18)	4.31 (5.19)	
	Heating (Rated (Max))	kW	1.58 (2.39)	2.19 (2.67)	2.62 (4.44)	3.3 (4.5)	4.0 (5.22)	4.45 (5.23)	
EER	Cooling	kW / kW	3.65	3.30	3.55	3.19	3.13	3.02	
COP	Heating	kW / kW	3.80	3.65	4.12	3.73	3.50	3.37	
Star Rating	Cooling: Hot/Average/Cold		3 / 2.5 / 2	3 / 2 / 1.5	2.5 / 2.5 / 2.5	2.5 / 2.5 / 2.5	3 / 2 / 1.5	2.5 / 2 / 1.5	
	Heating: Hot/Average/Cold		3.5 / 3 / 3	3 / 2.5 / 2.5	3 / 2.5 / 2	3 / 2 / 1.5	2.5 / 2.5 / 3	2.5 / 2.5 / 2.5	
TCSPF ¹	Residential (Hot/Average/Cold)	kW	5.012 / 4.663 / 4.844	4.558 / 4.294 / 4.484	4.781 / 4.91 / 5.264	4.338 / 4.141 / 4.359	4.462 / 4.265 / 4.509	4.354 / 4.163 / 4.412	
HSPF ²	Residential (Hot/Average/Cold)	kW	4.74 / 4.182 / 3.616	4.694 / 3.996 / 3.375	5.036 / 4.472 / 3.899	4.568 / 3.815 / 3.201	4.512 / 3.881 / 3.295	4.371 / 3.688 / 3.113	
Running current	Cooling/Heating	amps	5.9 / 6.8	9.1 / 9.2	11.0 / 11.2	13.6 / 13.9	16.8 / 16.8	18.1 / 18.7	
Moisture Removal		l/hr	1.3	1.7	1.6	2.9	4.5	5.0	
Sound Pressure Level	Indoor (Cooling)	High/Quiet	dBA	33 / 23	38 / 27	38 / 28	38 / 27	40 / 29	40 / 29
	Indoor (Heating)	High/Quiet		33 / 23	38 / 27	38 / 28	38 / 27	40 / 29	40 / 29
	Outdoor (Cooling/Heating)	High		48 / 49	48 / 50	51 / 53	53 / 53	55 / 57	55 / 57
Sound Power Level	Outdoor	High		62	68	69	70	71	72
Static Pressure Range	Min - Max		PA	50 - 150	50 - 150	50 - 150	50 - 150	50 - 150	50 - 150
Air Circulation	Indoor (Cooling)	High Fan	l/sec	300	416	541	575	600	600
	Indoor (Heating)	High Fan		300	416	541	575	600	600
Dimensions H x W x D	Indoor		mm	240 x 1000 x 700	240 x 1000 x 700	240 x 1400 x 700	240 x 1400 x 700	240 x 1400 x 700	240 x 1400 x 700
	Outdoor			632 x 799 x 290	716 x 820 x 315	788 x 940 x 320	788 x 940 x 320	998 x 940 x 320	998 x 940 x 320
Net Weight	Indoor		kg	31.00	31.00	42.00	42.00	42.00	42.00
	Outdoor			36.00	36.00	52.00	52.00	67.00	67.00
Connection Pipe Diameter (Liquid/Gas)		mm	6.35 / 12.7	6.35 / 12.7	9.52 / 15.88	9.52 / 15.88	9.52 / 15.88	9.52 / 15.88	
Pipe Length (Max (Precharged))		m	30 (20)	30 (20)	50 (30)	50 (30)	50 (30)	50 (30)	
Max Height Difference		m	20	25	30	30	30	30	
Operation Range	Outdoor (Min - Max)	Cooling	°CDB	-10 to 50	-10 to 50	-10 to 50	-10 to 50	-10 to 50	-10 to 50
		Heating		-15 to 24	-15 to 24	-15 to 24	-15 to 24	-15 to 24	-15 to 24
Refrigerant	Type		R32	R32	R32	R32	R32	R32	
	Charge		kg	1,020	1,250	1,900	1,900	2,700	2,700

¹Total Cooling Seasonal Performance Factor

²Heating Seasonal Performance Factor

Mid Static Slimline R32 (HP)

Set Code			SET-ARTH24KMTAP-HP	SET-ARTH30KMTAP-HP
Model No.	Indoor unit		ARTH24KMTAP-HP	ARTH30KMTAP-HP
	Outdoor unit		AOTH24KCTA	AOTH30KCTA
Power Source	V / Ph / Hz		230 / 1 / 50	
Capacity	Cooling (Rated (Min - Max))	kW	7.10 (3.3 - 8.5)	8.50 (4.1 - 10.5)
	Heating (Rated (Min - Max))	kW	8.00 (3.6 - 10.5)	10.00 (4.2 - 11.5)
Input Power	Cooling (Rated (Max))	kW	1.85 (2.72)	2.6 (3.38)
	Heating (Rated (Max))	kW	1.93 (2.89)	2.47 (3.12)
EER	Cooling	kW / kW	3.84	3.76
COP	Heating	kW / kW	4.15	4.05
Star Rating	Cooling: Hot/Average/Cold		3 / 2.5 / 2.5	3.5 / 2.5 / 2
	Heating: Hot/Average/Cold		3 / 2.5 / 3	3 / 3 / 3
TCSPF ¹	Residential (Hot/Average/Cold)	kW	4.712 / 4.474 / 4.598	4.8 / 4.569 / 4.727
HSPF ²	Residential (Hot/Average/Cold)	kW	4.962 / 4.491 / 4.043	5.036 / 4.472 / 3.899
Running current	Cooling/Heating		amps	8.0 / 8.4
Moisture Removal			l/hr	1.7
Sound Pressure Level	Indoor (Cooling)	High/Quiet	dBA	38 / 27
	Indoor (Heating)	High/Quiet		38 / 27
	Outdoor (Cooling/Heating)	High		48 / 50
Sound Power Level	Outdoor	High		67
Static Pressure Range	Min - Max		PA	50 - 150
Air Circulation	Indoor (Cooling)	High Fan	l/sec	416
	Indoor (Heating)	High Fan		416
Dimensions H x W x D	Indoor		mm	240 x 1000 x 700
	Outdoor			988 x 940 x 320
Net Weight	Indoor		kg	31.00
	Outdoor			63.00
Connection Pipe Diameter (Liquid/Gas)			mm	6.35 / 12.7
Pipe Length (Max (Precharged))			m	75 (30)
Max Height Difference			m	30
Operation Range	Outdoor (Min - Max)	Cooling	°CDB	-10 to 50
		Heating		-15 to 24
Refrigerant	Type		R32	R32
	Charge		kg	1,800

Product Specifications

High Static Single Phase R32

Set Code			SET-ARTH24KHTA	SET-ARTH30KHTA	SET-ARTH36KHTA	SET-ARTH45KHTA	SET-ARTH54KHTA	SET-ARTH60KHTA	
Model No.	Indoor unit		ARTH24KHTA	ARTH30KHTA	ARTH36KHTA	ARTH45KHTA	ARTH54KHTA	ARTH60KHTA	
	Outdoor unit		AOTH24KBTA	AOTH30KBTA	AOTH36KBTA	AOTH45KBTA	AOTH54KBTA	AOTH60KBTA	
Power Source	V / Ph / Hz		230 / 1 / 50						
Capacity	Cooling (Rated (Min - Max))	kW	7.10 (1.8 - 8.1)	8.50 (2.8 - 10.3)	10.00 (2.8 - 11.4)	12.50 (4.0 - 14.0)	14.00 (4.5 - 15.0)	15.50 (5.0 - 16.5)	
	Heating (Rated (Min - Max))	kW	8.00 (2.0 - 9.1)	10.00 (2.7 - 11.3)	11.20 (2.7 - 14.0)	14.00 (4.2 - 16.5)	15.50 (4.7 - 18.0)	18.00 (5.1 - 19.0)	
Input Power	Cooling (Rated (Max))	kW	2.14 (2.53)	2.35 (3.47)	3.08 (4.01)	3.80 (5.16)	4.64 (5.17)	4.94 (6.02)	
	Heating (Rated (Max))	kW	2.05 (2.45)	2.35 (4.12)	2.8 (4.21)	3.42 (5.22)	4.40 (5.23)	4.89 (6.74)	
EER	Cooling	kW / kW	3.32	3.62	3.25	3.29	3.02	3.14	
COP	Heating	kW / kW	3.90	4.26	4.00	4.09	3.52	3.68	
Star Rating	Cooling: Hot/Average/Cold		3 / 3 / 3	3 / 2.5 / 3	3 / 2.5 / 3	3 / 2.5 / 3	2.5 / 2.5 / 2.5	2.5 / 2.5 / 2.5	
	Heating: Hot/Average/Cold		3 / 2.5 / 1.5	3 / 2.5 / 2	3 / 2.5 / 1.5	3 / 2.5 / 2	3 / 2 / 1.5	2.5 / 2 / 1.5	
TCSPF ¹	Residential (Hot/Average/Cold)	kW	4.912 / 4.611 / 4.875	4.695 / 4.469 / 4.637	4.642 / 4.426 / 4.675	4.612 / 4.403 / 4.635	4.339 / 4.147 / 4.39	4.378 / 4.193 / 4.416	
HSPF ²	Residential (Hot/Average/Cold)	kW	4.825 / 4.11 / 3.444	4.61 / 4.211 / 3.654	4.72 / 4.073 / 3.429	4.766 / 4.208 / 3.574	4.691 / 3.937 / 3.306	4.487 / 3.885 / 3.31	
Running current	Cooling/Heating	amps	9.4 / 9.0	10.4 / 10.4	13.6 / 12.3	16.7 / 15.0	20.4 / 19.3	21.7 / 21.4	
Moisture Removal		l/hr	0.5	0.1	1.4	0.9	1.6	2.8	
Sound Pressure Level	Indoor (Cooling)	High/Quiet	dBA	34 / 27	41 / 36	41 / 36	43 / 35	45 / 36	45 / 36
	Indoor (Heating)	High/Quiet		34 / 27	41 / 36	41 / 36	43 / 35	45 / 36	45 / 36
	Outdoor (Cooling/Heating)	High		48 / 50	51 / 53	53 / 53	55 / 57	55 / 57	53 / 55
Sound Power Level	Outdoor	High		68	69	70	71	72	71
Static Pressure Range	Min - Max		PA	60 - 210	60 - 210	60 - 210	60 - 260	60 - 260	60 - 260
Air Circulation	Indoor (Cooling)	High Fan	l/sec	500	695	695	903	986	986
	Indoor (Heating)	High Fan		500	695	695	903	986	986
Dimensions H x W x D	Indoor		mm	400 x 1050 x 500	400 x 1050 x 500	400 x 1050 x 500	425 x 1250 x 490	425 x 1250 x 490	425 x 1250 x 490
	Outdoor			716 x 820 x 315	788 x 940 x 320	788 x 940 x 320	998 x 940 x 320	998 x 940 x 320	1418 x 970 x 370
Net Weight	Indoor		kg	38.00	39.00	39.00	53.00	53.00	53.00
	Outdoor			36.00	52.00	52.00	67.00	67.00	95.00
Connection Pipe Diameter (Liquid/Gas)		mm	6.35 / 12.7	9.52 / 15.88	9.52 / 15.88	9.52 / 15.88	9.52 / 15.88	9.52 / 15.88	
Pipe Length (Max (Precharged))		m	30 (20)	50 (30)	50 (30)	50 (30)	50 (30)	50 (30)	
Max Height Difference		m	25	30	30	30	30	30	
Operation Range	Outdoor (Min - Max)	Cooling	°CDB	-10 to 50	-10 to 50	-10 to 50	-10 to 50	-10 to 50	-10 to 50
		Heating		-15 to 24	-15 to 24	-15 to 24	-15 to 24	-15 to 24	-15 to 24
Refrigerant	Type		R32	R32	R32	R32	R32	R32	
	Charge	kg	1,250	1,900	1,900	2,700	2,700	2,550	

¹Total Cooling Seasonal Performance Factor

²Heating Seasonal Performance Factor

High Static Single Phase R32 (HP)

Set Code			SET-ARTH30KHTA-HP	SET-ARTH36KHTA-HP	SET-ARTH45KHTA-HP	SET-ARTH54KHTA-HP	SET-ARTH60KHTB	
Model No.	Indoor unit		ARTH30KHTA-HP	ARTH36KHTA-HP	ARTH45KHTA-HP	ARTH54KHTA-HP	ARTH60KHTB	
	Outdoor unit		AOTH30KCTA	AOTH36KCTA	AOTH45KCTA	AOTH54KCTA	AOTH60KCTA	
Power Source	V / Ph / Hz		230 / 1 / 50					
Capacity	Cooling (Rated (Min - Max))	kW	8.50 (4.1 - 11.0)	10.00 (5.0 - 13.0)	12.50 (5.6 - 14.5)	14.00 (6.3 - 16.5)	16.00 (7.4 - 17.5)	
	Heating (Rated (Min - Max))	kW	10.00 (4.2 - 12.0)	12.50 (5.2 - 15.0)	15.00 (5.2 - 17.0)	16.50 (5.8 - 18.5)	18.00 (7.4 - 20.5)	
Input Power	Cooling (Rated (Max))	kW	2.18 (3.36)	2.6 (5.01)	3.43 (4.39)	3.91 (5.35)	4.82 (5.31)	
	Heating (Rated (Max))	kW	2.2 (3.12)	2.94 (4.65)	3.49 (4.46)	4.00 (4.49)	4.63 (5.19)	
EER	Cooling	kW / kW	3.90	3.85	3.61	3.58	3.32	
COP	Heating	kW / kW	4.55	4.25	4.30	4.13	3.89	
Star Rating	Cooling: Hot/Average/Cold		3 / 3 / 3	3 / 3 / 3	3 / 3 / 3	3 / 2.5 / 3	3 / 2.5 / 3	
	Heating: Hot/Average/Cold		3 / 3 / 2	3 / 2.5 / 2	3 / 2.5 / 2	2.5 / 2.5 / 2	3 / 2.5 / 1.5	
TCSPF ¹	Residential (Hot/Average/Cold)	kW	4.833 / 4.593 / 4.727	4.964 / 4.727 / 4.9	4.785 / 4.573 / 4.76	4.666 / 4.464 / 4.642	4.533 / 4.342 / 4.555	
HSPF ²	Residential (Hot/Average/Cold)	kW	4.856 / 4.509 / 3.994	4.912 / 4.377 / 3.733	4.702 / 4.305 / 3.753	4.4 / 4.028 / 3.502	4.521 / 4.001 / 3.428	
Running current	Cooling/Heating		amps	9.6 / 9.7	11.4 / 12.9	15.1 / 15.3	17.2 / 17.5	21.1 / 20.3
Moisture Removal			l/hr	0.1	1.4	0.9	1.6	3.4
Sound Pressure Level	Indoor (Cooling)	High/Quiet	dBA	41 / 36	41 / 36	43 / 35	45 / 36	44 / 39
	Indoor (Heating)	High/Quiet		41 / 36	41 / 36	43 / 35	45 / 36	44 / 39
	Outdoor (Cooling/Heating)	High		51 / 53	53 / 53	53 / 53	53 / 55	53 / 55
Sound Power Level	Outdoor	High		69	70	70	71	71
Static Pressure Range	Min - Max		PA	60 - 210	60 - 210	60 - 260	60 - 260	60 - 250
Air Circulation	Indoor (Cooling)	High Fan	l/sec	695	695	903	986	1139
	Indoor (Heating)	High Fan		695	695	903	986	1139
Dimensions H x W x D	Indoor		mm	400 x 1050 x 500	400 x 1050 x 500	425 x 1250 x 490	425 x 1250 x 490	360 x 1400 x 850
	Outdoor			998 x 940 x 320	998 x 940 x 320	1418 x 970 x 370	1418 x 970 x 370	1418 x 970 x 370
Net Weight	Indoor		kg	39.00	39.00	53.00	53.00	69.00
	Outdoor			64.00	67.00	95.00	101.00	101.00
Connection Pipe Diameter (Liquid/Gas)			mm	9.52 / 15.88	9.52 / 15.88	9.52 / 15.88	9.52 / 15.88	9.52 / 15.88
Pipe Length (Max (Precharged))			m	75 (30)	75 (30)	75 (30)	75 (30)	75 (30)
Max Height Difference			m	30	30	30	30	30
Operation Range	Outdoor (Min - Max)	Cooling	°CDB	-10 to 50	-10 to 50	-10 to 50	-10 to 50	-10 to 50
		Heating		-15 to 24	-15 to 24	-15 to 24	-15 to 24	-15 to 24
Refrigerant	Type			R32	R32	R32	R32	R32
	Charge		kg	2,100	2,500	3,400	3,800	3,800

Product Specifications

High Static Three Phase R32

Set Code			SET-ARTH36KHTA-3PH	SET-ARTH45KHTA-3PH	SET-ARTH54KHTA-3PH	SET-ARTH60KHTA-3PH
Model No.	Indoor unit		ARTH36KHTA-3PH	ARTH45KHTA-3PH	ARTH54KHTA-3PH	ARTH60KHTA-3PH
	Outdoor unit		AOTH36KRTA	AOTH45KRTA	AOTH54KRTA	AOTH60KRTA
Power Source	V / Ph / Hz		400 / 3 / 50			
Capacity	Cooling (Rated (Min - Max))	kW	10.00 (2.8 - 11.4)	12.50 (4.0 - 14.0)	14.00 (4.5 - 15.0)	15.50 (5.0 - 16.5)
	Heating (Rated (Min - Max))	kW	11.20 (2.7 - 14.0)	14.00 (4.2 - 16.5)	15.50 (1.7 - 18.0)	18.00 (5.1 - 19.0)
Input Power	Cooling (Rated (Max))	kW	3.08 (4.01)	3.80 (5.16)	4.64 (5.17)	4.94 (6.02)
	Heating (Rated (Max))	kW	2.8 (4.21)	3.42 (5.22)	4.40 (5.23)	4.89 (6.74)
EER	Cooling	kW / kW	3.25	3.29	3.02	3.14
COP	Heating	kW / kW	4.00	4.09	3.52	3.68
Star Rating	Cooling: Hot/Average/Cold		3 / 2.5 / 3	3 / 2.5 / 3	2.5 / 2.5 / 2.5	2.5 / 2.5 / 2.5
	Heating: Hot/Average/Cold		3 / 2.5 / 1.5	3 / 2.5 / 2	3 / 2 / 1.5	2.5 / 2 / 1.5
TCSPF ¹	Residential (Hot/Average/Cold)	kW	4.642 / 4.426 / 4.675	4.612 / 4.403 / 4.635	4.339 / 4.147 / 4.39	4.378 / 4.193 / 4.416
HSPF ²	Residential (Hot/Average/Cold)	kW	4.72 / 4.073 / 3.429	4.766 / 4.208 / 3.574	4.691 / 3.937 / 3.306	4.487 / 3.885 / 3.31
Running current	Cooling/Heating		amps	5.2 / 4.7	6.4 / 5.7	7.7 / 7.0
Moisture Removal			l/hr	1.4	0.9	1.6
Sound Pressure Level	Indoor (Cooling)	High/Quiet	dBA	41 / 36	43 / 35	45 / 36
	Indoor (Heating)	High/Quiet		41 / 36	43 / 35	45 / 36
	Outdoor (Cooling/Heating)	High		53 / 53	55 / 57	55 / 57
Sound Power Level	Outdoor	High		70	71	72
Static Pressure Range	Min - Max		PA	60 - 210	60 - 260	60 - 260
Air Circulation	Indoor (Cooling)	High Fan	l/sec	695	903	986
	Indoor (Heating)	High Fan		695	903	986
Dimensions H x W x D	Indoor		mm	400 x 1050 x 500	425 x 1250 x 490	425 x 1250 x 490
	Outdoor			788 x 940 x 320	998 x 940 x 320	998 x 940 x 320
Net Weight	Indoor		kg	39.00	53.00	53.00
	Outdoor			53.00	67.00	67.00
Connection Pipe Diameter (Liquid/Gas)			mm	9.52 / 15.88	9.52 / 15.88	9.52 / 15.88
Pipe Length (Max (Precharged))			m	50 (30)	50 (30)	50 (30)
Max Height Difference			m	30	30	30
Operation Range	Outdoor (Min - Max)	Cooling	°CDB	-10 to 50	-10 to 50	-10 to 50
		Heating		-15 to 24	-15 to 24	-15 to 24
Refrigerant	Type			R32	R32	R32
	Charge		kg	1,500	2,180	2,180

¹Total Cooling Seasonal Performance Factor

²Heating Seasonal Performance Factor

High Static Three Phase R410A

Set Code			SET-ARTG65LHTA	SET-ARTC72LATU	SET-ARTC90LATU
Model No.	Indoor unit		ARTG65LHTA	ARTC72LATU	ARTC90LATU
	Outdoor unit		AOTG65LRLA	AOTA72LALT	AOTA90LALT
Power Source	V / Ph / Hz		400 / 3 / 50		
Capacity	Cooling (Rated (Min - Max))	kW	18.00 (8.4 - 20.0)	20.30 (10.8 - 23.5)	25.00 (11.2 - 28.0)
	Heating (Rated (Min - Max))	kW	20.00 (7.2 - 22.0)	22.60 (12.0 - 26.5)	28.00 (12.5 - 31.5)
Input Power	Cooling (Rated (Max))	kW	0.46 (5.36) ³	6.25 (10.1)	7.82 (12.5)
	Heating (Rated (Max))	kW	0.50 (4.80) ³	6.27 (10.1)	8.24 (12.5)
EER	Cooling	kW / kW	3.09	3.25	3.20
COP	Heating	kW / kW	3.77	3.60	3.40
Star Rating	Cooling: Hot/Average/Cold		2.5 / 2.0 / 2.0	2.0 / 1.5 / 1.5	2.0 / 1.5 / 1.5
	Heating: Hot/Average/Cold		3.5 / 2.5 / 2.0	2.0 / 1.5 / 1.5	1.5 / 1.5 / 1.0
TCSPF ¹	Residential (Hot/Average/Cold)	kW	4.121 / 3.816 / 3.936	3.857 / 3.414 / 3.409	3.838 / 3.451 / 3.469
HSPF ²	Residential (Hot/Average/Cold)	kW	4.609 / 4.167 / 3.819	3.629 / 3.434 / 3.119	3.497 / 3.196 / 2.827
Running current	Cooling/Heating		amps	3.2 / 3.2	9.3 / 9.3
Moisture Removal			l/hr	4.5	6.0
Sound Pressure Level	Indoor (Cooling)	High/Quiet	dBA	45 / 36	49 / 43
	Indoor (Heating)	High/Quiet		45 / 36	49 / 43
	Outdoor (Cooling/Heating)	High		51 / 53	58 / 59
Sound Power Level	Outdoor	High		70	81
Static Pressure Range	Min - Max		PA	60 - 200	50 - 250
Air Circulation	Indoor (Cooling)	High Fan	l/sec	1139	1347
	Indoor (Heating)	High Fan		1139	1347
Dimensions H x W x D	Indoor		mm	360 x 1400 x 850	450 x 1587 x 700
	Outdoor			1428 x 1080 x 480	1690 x 930 x 765
Net Weight	Indoor		kg	69.00	110.00
	Outdoor			163.00	215.00
Connection Pipe Diameter (Liquid/Gas)			mm	12.7 / 25.4	12.7 / 25.4
Pipe Length (Max (Precharged))			m	75 (30)	75 (20)
Max Height Difference			m	30	30
Operation Range	Outdoor (Min - Max)	Cooling	°CDB	-15 to 46	-5 to 46
		Heating		-15 to 24	-15 to 24
Refrigerant	Type			R410A	R410A
	Charge		kg	5,600	11,200

³ Indoor & outdoor

NEW ZEALAND'S FAVOURITE AIR®

| FUJITSU

FUJITSU GENERAL NEW ZEALAND
A SUBSIDIARY OF FUJITSU GENERAL LIMITED

fujitsugeneral.co.nz
04 568 876
contact@fujitsugeneral.co.nz

Fujitsu General accepts no liability for incorrect data.
Please ensure you have confirmed installation
requirements and pipe sizes prior to install.

FGNZDUCTED11/23

AIRSTAGE